



FULLY INVOLVED

THE OFFICIAL PUBLICATION OF THE MCLANE BLACK LAKE FIRE DEPARTMENT
THURSTON COUNTY FIRE DISTRICT 9 | SUMMER 2025 EDITION

AUGUST LEVY WILL SUPPORT FIRE DISTRICT OPERATIONS

Your ballot for the August 2025 Primary Election will be arriving this month. The Board of Commissioners for the McLane Black Lake Fire Department have placed a proposition on the ballot regarding the establishment of a property tax levy for voters' consideration. This is not a new levy; rather, it is the continuation of the existing regular fire property tax levy that funds the district's staffing and operations.

The McLane Black Lake FD regular fire levy continues to decrease since the last voter approved measure expired. The previous measure approved in 2022 set the rate at a \$1.50 per \$1,000 of assessed value. The reset was only for one year, and since then the levy has decreased annually as assessed value increases.

If approved by voters, the fire levy rate would be reinstated to \$1.50 per \$1,000 of assessed value (AV). This process is referred to as a "Fire Levy Lid Lift." The lid lift will reset the Regular Fire Levy to the statutory limit of \$1.50 per \$1,000 of assessed value. It is essential for you to understand how your fire and emergency medical services are provided and funded so that you have the information necessary to make an informed decision before voting.

Funding from the fire levy supports Fire District operations on a day-to-day basis and maintains emergency services delivery levels. This includes funding for personnel, training, equipment, and firefighting and emergency medical supplies. It also pays for the ongoing cost of maintaining and operating fire engines, water tenders, ambulances and rescue vehicles and equipment. Funding for these items is essential to delivering services and maintaining insurance rating levels.

The McLane Black Lake Fire Department is a combination fire district, meaning that fire and emergency medical response

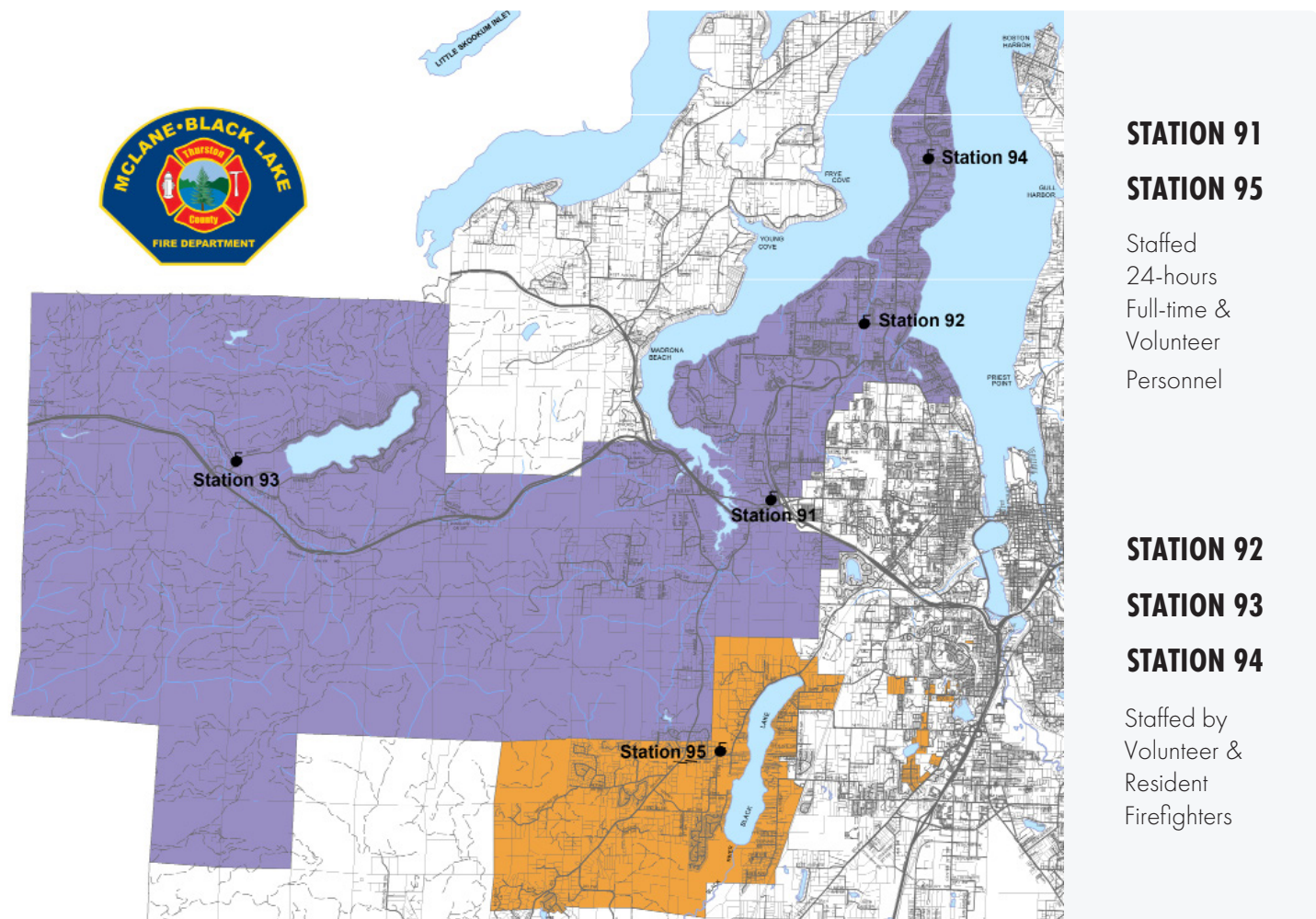
services are provided by both career and volunteer firefighters working together. This model provides the most cost-effective and efficient staffing to the community. Having a combination of paid and volunteer staffing at stations, the Fire District can provide the best response reliability when an emergency call for service is received.

What is response reliability? Response reliability is a measure of how quickly and effectively the fire department responds to calls for help. To effectively serve, the fire department must have consistent staffing and the necessary apparatus and equipment to support the emergency response needs of our diverse response area.

INSIDE THIS EDITION

August Primary Levy Measure Information.....	1-3
Fire District Hosts Bicycle Rodeo.....	4
Heat-Related Death Prevention.....	4
New Probationary Recruits.....	5
Community Resources.....	5
Wildfire Evacuations: Ready, Set, Go.....	6-7
Open House.....	Back Cover
Levy Informational Meetings.....	Back Cover
Levy FAQ.....	Back Cover

PLEASE REMEMBER TO **VOTE** ON OR BEFORE **AUGUST 5!**



Studies show that staffing, response times and trained personnel are the most impactful factors in creating a positive outcome for an emergency response.

What has changed? In the last 5 years the Fire District has seen an increased need to have more 24-hour staffing with firefighters and emergency medical personnel at Fire Stations to meet response needs of the community. Providing transport ambulance services has also increased significantly, especially with less availability of local private ambulance providers. The Fire District received limited support for BLS ambulance services through the countywide EMS levy. Dollars created through fees for service and the regular fire levy provide this essential service.

How is it funded? Funding to sustain current services is provided in two primary ways. First the regular fire levy has to be maintained at or near its threshold of \$1.50 per \$1,000 of AV. Second, by voter approved Maintenance and Operations Levy (M&O). The M&O Levy is submitted for approval to

Fire District voters, every four years and is necessary to fund capital projects and supporting additional Firefighter/EMT positions that are not funded by the regular fire levy. The Fire District does not collect an EMS Levy to support the ambulance program as it is collected by Thurston County. Therefore, the regular fire levy (Proposition 1) and the M&O Levy are all that are available to the Fire District to support the delivery of fire protection and emergency services.

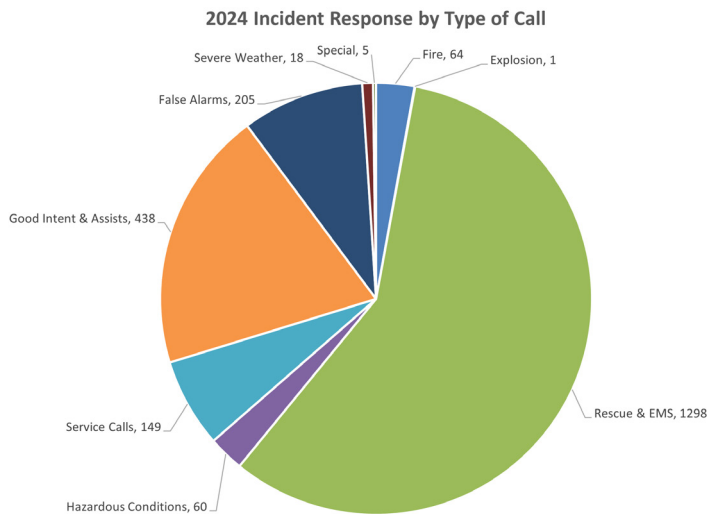
The regular fire levy is impacted by statewide levy restrictions. In 2001, funding for fire departments significantly changed when voters approved Initiative I-747. This initiative, when restored by the legislature in 2007 limited the annual regular fire levy increase to 1% increase over the previous year's collection, regardless of changes in the assessed value of properties, or the Consumer Price Index increase (cost of goods and services). With the 1% limitation, annual tax based funding falls short of the Fire Districts actual increase in expenses. The levy lid lift addresses the impact of inflation and will restore the regular fire levy to \$1.50 per \$1,000 of

AV which will be used to fund the daily operations of the Fire District.

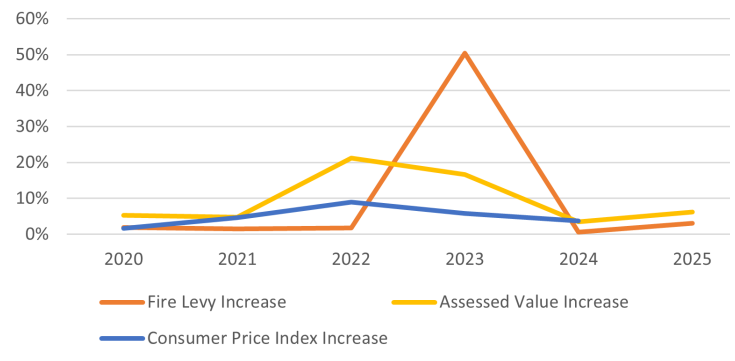
How much will it cost? The current regular fire levy is approximately \$1.42 per \$1,000 of assessed value. If approved, the restored levy will be \$1.50 per \$1,000 of AV for a single year, which is an estimated change of \$0.08 per \$1,000 of AV. For a homeowner with a residence at \$500,000 AV, this would mean an increase of \$40.00 per year.

The Fire District continues to be efficient and maintain levies at levels that are need to provides services throughout our community. The Fire District was successful at retiring all of its long-term supported by voter approved levy's by 2024. This reduced the overall rate in the Fire District.

The level of service the Fire District can provide is directly related to the available funding to support operations. The level of service the Fire District can provide is directly related to the available funding to support operations.



Levy Increase Comparison to Assessed Value and Consumer Price Index Increases by %



**REMEMBER TO
VOTE!
AUGUST 5**

FIRE DISTRICT HOSTS FREE BICYCLE RODEO

McLane Black Lake Fire Department hosted a free Bicycle Rodeo on May 31 at McLane Elementary School, where attendees could get safety checks, receive free helmets with proper fittings, and enjoy giveaways such as helmet decorations and snacks. Participants had the chance to practice bike safety skills in the Safe Kids of Thurston County traffic garden.

Special thanks go to Intercity Transit Walk & Roll for providing supplies and to Child Care Action Council alongside Safe Kids for providing use of the traffic garden. We're already looking forward to next year's event.



Attendees practice riding in the traffic garden while Firefighter Patti helps with bicycle traffic signs.



(Pictured Left to Right) Firefighters Raitses, Bickel, and Collins assist in helmet fittings.

Heat Related Deaths
ARE Preventable
LOOK BEFORE YOU LOCK



weather.gov/heat

nhtsa.gov

The temperature in your car can quickly become deadly!

Outside Temperature 80°



WELCOME, NEW RECRUITS!

Four recent graduates of the South Sound Recruit Academy—Nick Vankirk (D Shift), Miles Bickel (B Shift), Payton Wood (C Shift), and Nathan Johnson (A Shift)—have officially started the probationary phase of their firefighting careers. Now assigned to shift, the four new firefighters are filling new positions on each of the shifts, bringing the staffing levels to 29 full-time firefighters with the Fire District.

As probationary firefighters, the new recruits will participate in ongoing performance evaluations while gaining essential field experience. This critical stage is designed to further their practical training, preparing them for the many challenges inherent in the profession.

Department leadership noted that the probationary status symbolizes not only a commitment to personal and professional growth, but also a deep dedication to serving the local community. We extend our sincere congratulations to these individuals and recognize the hard work and determination that has brought them to this milestone.



Our new probationary firefighters—Van Kirk, Bickel, Wood and Johnson.

COMMUNITY RESOURCES

BLOOD PRESSURE CHECKS

Blood Pressure checks are available daily at Stations 91 or 95.

ADDRESS SIGNS

A clearly marked address sign can save valuable seconds in an emergency. We offer high quality metal reflective address signs to residents of our fire district for a nominal cost.

FACILITY USE

Fire District resident may reserve our classrooms for a local meeting.

NOTARY PUBLIC

Notary Services are available at Station 91 for our fire district residents Monday – Friday 8:30am – 4:00pm. Call in advance to set up an appointment. 360.866.1000

CPR CLASSES

Thurston County Medic One conducts CPR classes around the county including at our Station 91. See Thurston County Medic One CPR Class Registration | Thurston County to sign up for classes.

RESIDENTIAL KNOX BOX

Residential Knox Boxes are high security key safes that are trusted and supported by the McLane Black Lake Fire Department. They provide First Responders with access to your home quickly, make re-securing property easier and faster, and reduce forced entry property damage. Contact our office at 360 866-1000 or go to our website at www.mclanefire.org for more information on how to participate.

SMART 911

Provides information to 9-1-1 so they can assist faster in an emergency. Contact our office at 360 866-1000 or go to our website at www.mclanefire.org or more information and sign up for SMART 911 services.

WILDFIRE EVACUATIONS: UNDERSTANDING READY, SET, GO

Wildfires have become an increasingly common and destructive force in Washington State, threatening lives, homes, and communities. As we face another wildfire season, it is crucial for residents to be prepared and informed. Washington State's "Ready, Set, Go" program offers a clear and structured approach to evacuation, helping ensure the safety of all residents. Here's a closer look at what this program entails and how you can implement it to protect yourself and your loved ones.

READY: PREPARE NOW

"Ready" is all about preparation. Being ready means taking steps long before a wildfire threatens your area. Here are key actions to ensure you are prepared:

- **Create a Defensible Space:** Maintain a buffer zone by clearing away flammable vegetation and other materials around your home. This helps reduce the risk of fire spreading to your property.
- **Assemble an Emergency Supply Kit:** Include essentials like water, non-perishable food, medications, first aid supplies, important documents, and personal items.
- **Make a Family Communication Plan:** Establish a plan for how your family will communicate during an emergency. Ensure everyone knows the emergency contacts and meeting places.
- **Stay Informed:** Sign up for emergency alerts and stay updated on local news. Understand your community's evacuation plans and routes.

SET: BE ALERT

When a wildfire is imminent, it's time to get "Set." This phase focuses on heightened awareness and readiness to leave at a moment's notice:

- **Monitor Fire Conditions:** Keep a close watch on local news and weather updates. Be aware of any changes in fire activity and stay alert for evacuation notices.
- **Pack and Position Your Vehicle:** Load your emergency supply kit and any additional necessary items into your vehicle. Park your car facing the direction of your evacuation route and keep the gas tank full.
- **Prepare Your Home:** Close all windows and doors to prevent embers from entering. Move flammable furniture

away from windows and doors, and shut off natural gas, propane, or fuel oil supplies if instructed to do so.

- **Dress Appropriately:** Wear long sleeves, long pants, sturdy shoes, and have a face covering to protect against smoke and heat.

GO: ACT EARLY

When it's time to "Go," you must act quickly and decisively. Delaying evacuation can be dangerous, as wildfires can spread rapidly and unpredictably:

- **Follow Evacuation Orders:** If local authorities issue an evacuation order, leave immediately. Do not wait for a personal warning.
- **Take Your Emergency Kit:** Grab your emergency supply kit, additional necessary items, and ensure all family members, including pets, are accounted for.
- **Choose a Safe Route:** Follow the recommended evacuation routes and avoid shortcuts, which may be blocked or dangerous.
- **Stay Connected:** Continue to listen to emergency updates and follow instructions from local authorities. Once you are in a safe location, let your family and friends know you are safe.



GO! KIT

- | | |
|--|---|
| <input type="checkbox"/> Personal documents, photos, and valuables | <input type="checkbox"/> Medications |
| <input type="checkbox"/> Battery powered weather radio | <input type="checkbox"/> Child and pet care supplies |
| <input type="checkbox"/> Flashlights and extra batteries | <input type="checkbox"/> Toiletries |
| <input type="checkbox"/> Three-day supply of food and water (one gallon of water per person per day) | <input type="checkbox"/> Phone and chargers |
| | <input type="checkbox"/> Extra, dry clothing |
| | <input type="checkbox"/> Toilet paper |
| | <input type="checkbox"/> Tool kit |
| | <input type="checkbox"/> Important contact numbers |
| | <input type="checkbox"/> Comfort or entertainment items |

Learn more about the supplies and tools you'll need to evacuate at WWW.THURSTONCOUNTYWA.GOV/EM

COMMUNITY AND RESOURCES

Washington State offers numerous resources to help residents prepare for and respond to wildfires. The Washington State Department of Natural Resources (DNR)

and local emergency management offices provide information and assistance. Community wildfire protection plans (CWPPs) are also available to help neighborhoods develop strategies tailored to their specific risks.

CONCLUSION

Wildfires are an ever-present threat in Washington State, but by following the “Ready, Set, Go” program, residents can significantly enhance their safety and preparedness. Remember, being ready means being prepared long before a fire starts, staying set involves being vigilant and ready to leave, and going means evacuating quickly and safely when ordered. By adopting these practices, we can protect our families, homes, and communities from the devastating impacts of wildfires.



TC ALERT: Be alert and stay informed. Sign up to receive emergency alerts via phone or email.
WWW.TCALERT.ORG

THURSTON COUNTY EMERGENCY MANAGEMENT:

Find up-to-date information on emergencies.
WWW.THURSTONCOUNTYWA.GOV/EM

IN CASE OF AN EMERGENCY PLEASE CALL 911



LEVEL 1 READY

Be aware of the danger in your area and start preparing to evacuate

- Monitor local media and check on neighbors
- Update your GO! kit
- Review your plan - check evacuation routes and shelter locations
- Prepare both the inside and outside of your home
- Leave if you feel unsafe

LEVEL 2 SET

Be prepared for sudden evacuation - leave now if you need extra time

- Ensure your evacuation checklist is complete
- Ensure your GO! kit is in your evacuation vehicle
- Continue to monitor local media
- Leave if you feel unsafe

LEVEL 3 GO!

Leave now! Danger in your area

- Follow directions from police or fire departments
- Do not return home until officials have determined it is safe

THURSTON COUNTY READY



**EMERGENCY
EVACUATION
LEVELS 1 2 3**



LEVEL 1 READY

Possible evacuation in your area



LEVEL 2 SET

Short notice evacuation likely in your area



LEVEL 3 GO!

Evacuate immediately from your area



FOR MORE INFORMATION AND TO SIGN UP FOR EMERGENCY ALERTS GO TO WWW.THURSTONCOUNTYWA.GOV/EM



This publication is funded by agreement 97.039 (HMGP) and does not constitute an endorsement by FEMA or reflect FEMA's views.



MCLANE BLACK LAKE FIRE DEPARTMENT

125 DELPHI RD NW
OLYMPIA, WA 98502

PRSRT STD
US POSTAGE
PAID
OLYMPIA, WA
PERMIT #107

LEVY INFORMATIONAL MEETINGS

JULY 15 STATION 95: 5911 Black Lake Blvd SW, Olympia

JULY 22 STATION 94: 6005 Cooper Point Rd NW, Olympia

JULY 29 STATION 93: 2815 Summit Lake Shore Rd, Olympia

JULY 31 STATION 91: 125 Delphi Rd NW, Olympia

All Meetings are at **6:00 p.m.**

LINK: www.mclanefire.org

HOUSEHOLD VOTER(S)

JOIN US FOR OUR **OCTOBER 4, 2025** OPEN HOUSE

FIRE LEVY LID LIFT - FACTS & INFORMATION

What is on my August Primary Election Ballot? McLane Black Lake Fire Department (Fire District 9) is asking voters to return the fire levy from \$1.42 back to \$1.50 per \$1,000 of assessed property value for a single year. This is called a "fire levy lid lift."

Why is my Fire District asking for a lid lift? McLane Black Lake FD currently funds all its daily staffing, operations and volunteer programs through its regular fire levy and the maintenance and operations levy (M&O). The regular fire operating levy is necessary to provide fire suppression, Basic Life Support ambulance services, special rescue operations, fire prevention, maintenance of apparatus and equipment and other essential services to the citizens in the Fire District.

Have voters approved this before? Yes, voters approved a fire levy lid lift in 2022. Since then, the fire levy has fallen to \$1.42 per \$1,000 of assessed property value.

How much will the lid lift cost? How long does it last? The 8-cent lid lift would cost the owner of a \$500,000 home \$40.00 per year (\$3.34 per month). The lid lift would last for one (1) year, and then the levy rate would start to fall again.

Can the fire levy ever go above \$1.50 per \$1,000? No. By state law, the fire levy can never exceed \$1.50 per \$1,000.

What does it pay for? The fire levy pays for daily operations, such

as emergency personnel, equipment, apparatus, medical supplies, facilities, and repairs and maintenance. It supports both career and volunteer firefighters that provide firefighting and emergency medical services 24-hours a day.

Doesn't the fire district get more taxes because of increasing property value? The fire district is limited to a 1 percent revenue increase per year by state law regardless of how much a home appreciates in value. In other words, we do not receive a 10 percent increase in revenue if your home value increases by that amount.

Does the fire district receive money from the state or county? No, McLane Black Lake FD is separate from the county and state and receives no funding from them, including any sales tax. The fire levy is the primary funding source for fire and emergency services that are provided within the Fire District.

What about taxes from "new growth"? This tax revenue is used to make sure an emergency response (including adequate staffing levels, apparatus, facilities, equipment, and supplies) is available for new homes in the fire district.

What is the fire district doing to make our tax dollars stretch further? McLane Black Lake FD has strong financial practices that enable it to fund operations and staffing needs through its two operating levies for fire and EMS.